



iPhone 8

iPhone 8 Plus

Apple Recycler Guide

June 2023

Contents

3	About This Guide
4	Identification
5	Directive 2012/19/EU Annex VII Components
6	Safety Considerations
8	Recommended Tools
9	Disassembly Instructions
21	Material Categorization of Output Fractions

About This Guide

Apple Recycler Guides provide guidance for electronics recyclers on how to disassemble products to maximize recovery of resources. The guides provide step-by-step disassembly instructions and information on the material composition to help recyclers direct fractions to the appropriate material recycler.

To conserve important resources, we work to reduce the materials we use and aim to one day source only recycled or renewable materials in our products. A key path to reaching that goal is resource recovery from end-of-life electronics.

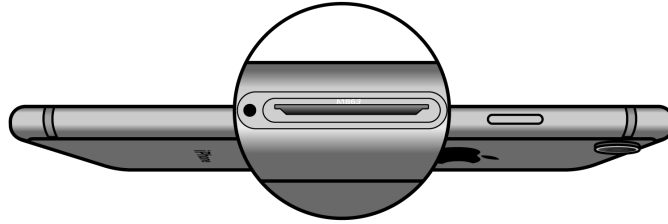
Disassembly procedures are intended to be performed only by trained electronics recycling professionals. The recycler is responsible for independently evaluating and ensuring compliance with all applicable environmental, health, and safety laws related to the work. These include but are not limited to laws relating to the management, handling, shipping, and disposal of the outputs of this work as waste and laws in place to ensure the health and safety of all employees who support this work.

For questions or feedback about this guide, email contactesci@apple.com.

Note: This guide may show images from other similar models, but the procedures are the same.

Identification

You can find the model number of the iPhone inside the SIM tray slot.



Model numbers:

A1863, A1864, A1897, A1898, A1899, A1905, A1906, A1907

Directive 2012/19/EU Annex VII Components

Directive 2012/19/EU Annex VII requirements apply to the following substances and components.

Substance/Component	Apple Part Name	Removal Instructions
Printed circuit board if the surface is greater than 10 square centimeters	Main logic board	Follow steps 1–10
External electric cables	Power adapter, charge cable	Follow step 1
Battery	Lithium-ion polymer battery	Follow steps 1–6
Cover glass and liquid crystal display (LCD) cell if the surface is greater than 100 square centimeters	LCD cell	Follow steps 1–5
No further substances or components as listed in Annex VII		

Safety Considerations

The recycler is responsible for independently evaluating all activities undertaken by its employees to perform or support the work and ensuring compliance with all applicable health and safety laws related to the work. These include but are not limited to laws relating to the health and safety of all employees who perform or support this work. The recycler is also responsible for evaluating the workspace and ensuring that the area in which the work is to be undertaken is designed using ergonomic best practices and meets all ergonomic requirements to ensure the protection of its employees.

Personal Protective Equipment

Personal protective equipment should be worn during the entire recycling process.



Wear hand protection



Wear protective clothing



Wear eye protection



Wear foot protection

Battery Safety

This product uses a lithium-ion polymer battery. Before beginning any disassembly work, ensure that a safe working procedure for handling lithium-ion batteries has been established, which could include discharging the batteries so that they can be more safely managed. The following considerations may also be included:

- Remove anything from your person that could conduct energy, such as jewelry and watches, to avoid electric shock to yourself or the logic board.
- To avoid the potential for thermal runaway and the release of potentially noxious fumes, don't puncture, strike, or crush lithium-ion polymer batteries or devices powered by them.
- Don't throw, drop, or bend the battery.
- Don't expose the battery to excessive heat or sunlight.
- Don't use tools that are sharp or conduct electricity.
- Keep your workspace clear of foreign objects and sharp materials.
- Dispose of batteries according to local environmental laws and guidelines.

Workspace safety guidelines

- Use heat-resistant gloves and safety glasses.
- Keep a sand dispenser within arm's reach (2 feet or 0.6 m) on one side of the workstation, not above the workstation. The dispenser should be a wide-mouthed, quick-pour metal container with a flip-top lid or tray that contains 8–10 cups (1.9–2.4 L) of clean, dry, untreated sand.
- Keep the battery at least 2 feet (0.6 m) from paper and other combustible materials.
- Work in an area with adequate ventilation.

Handling a thermal runaway

If you notice any of the following signs, a thermal runaway is likely underway, and you should act immediately:

- The lithium-ion polymer battery or a device containing one begins to smoke or emit sparks or soot.
- The battery pouch suddenly and quickly puffs out.
- You hear hissing or popping sounds.

Don't use water or an ABC/CO₂ fire extinguisher on a thermal runaway battery or a device containing one. Water and ABC/CO₂ fire extinguishers will not stop the reaction.

Do smother the battery or device immediately with plenty of clean, dry sand, dumped all at once. Timing is critical; the faster you pour all the sand, the faster the thermal runaway will stop.

Do leave the room for 30 minutes if the thermal runaway causes any irritation.

Do wait 30 minutes before touching the battery. Wear heat-resistant gloves and safety glasses to remove the battery from the sand, or use a touchless thermometer to measure the battery temperature. Only touch the battery when the event has finished.

Do dispose of the damaged battery or device (including any debris removed from the sand) according to local environmental laws and guidelines.

Hazard Warnings



Broken glass hazard



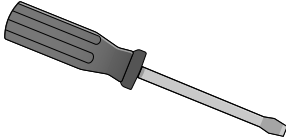
Rechargeable battery hazard



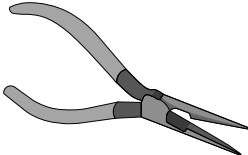
Chemical exposure hazard

Recommended Tools

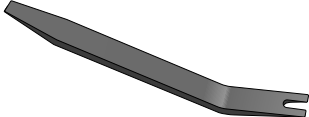
Flat-blade screwdriver



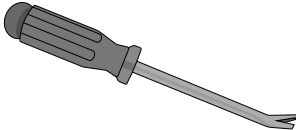
Long-nose pliers



Miniature plastic pry bar



Nail-pulling screwdriver



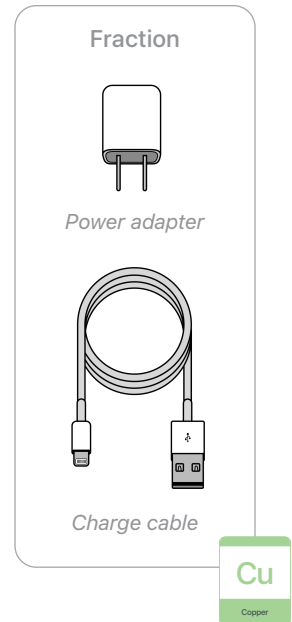
Tweezers



Disassembly Instructions

1. Remove the power adapter and charge cable.

- » *Ensure that the iPhone is turned off.*
- » *Unplug the power adapter. Disconnect both ends of the charge cable.*



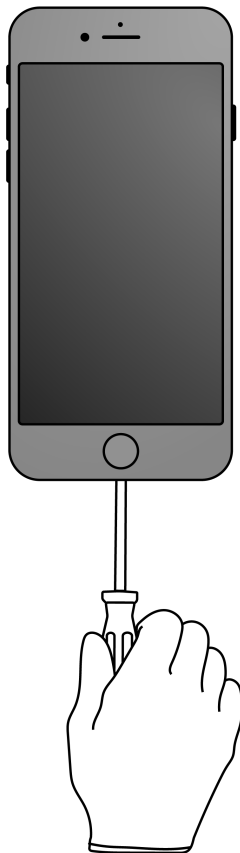
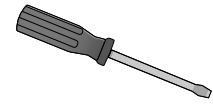
2. Remove the display.



Broken glass hazard

- » *Hold the iPhone at the edge of a counter with the display faceup and the Lightning connector toward the counter edge.*
- » *Insert the tool tip into the Lightning connector. Push the handle down to pry the display from the enclosure.*

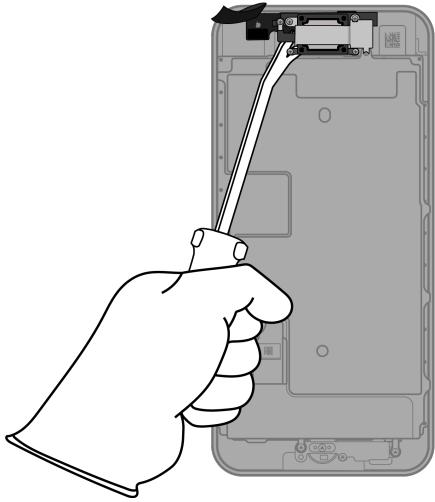
Tools Used



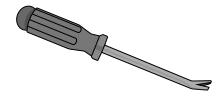
- » *Remove the display by hand. Set the enclosure aside.*

3. Remove the front camera and receiver.

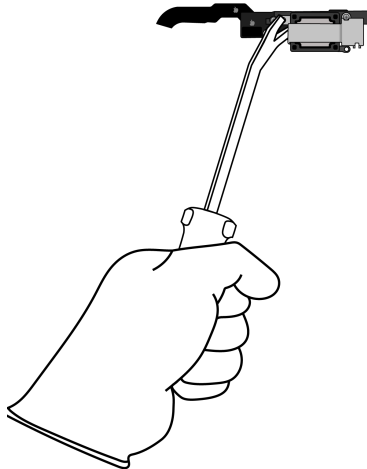
- » *With the display facedown, pry off the front camera. Set the display aside.*



Tools Used



- » *Separate the receiver and the front camera.*



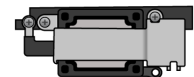
Fraction



Front camera



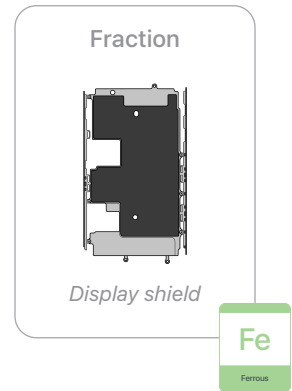
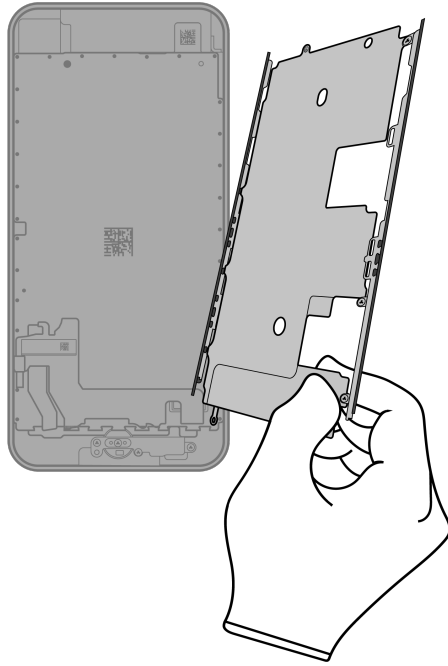
Fraction



Receiver



4. Lift the display shield off the display.

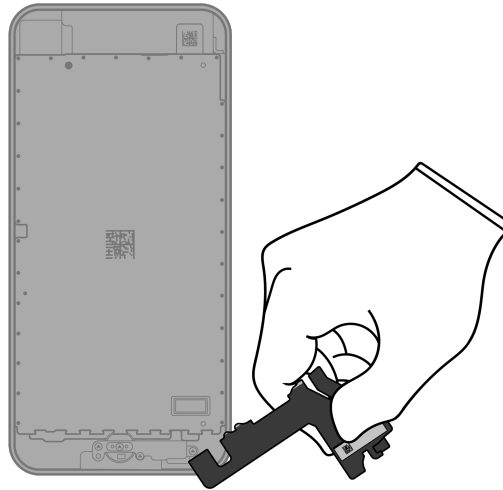


5. Remove the LCD cell.

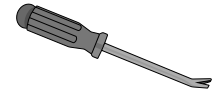


Chemical exposure hazard

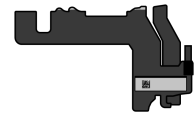
» Pull the ribbon cable off the bottom of the display.



Tools Used



Fraction

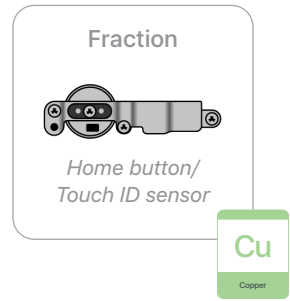
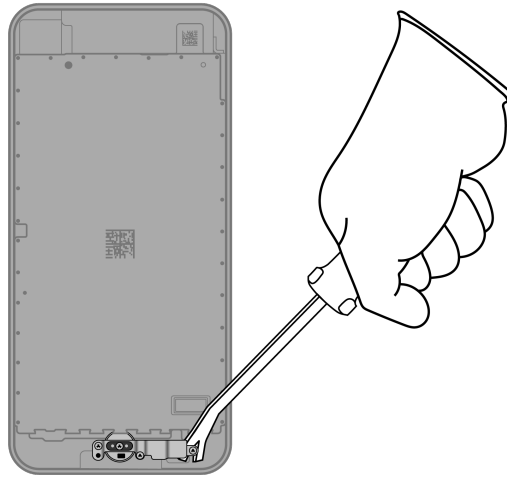


Ribbon cable

Cu

Copper

» Pry the Home button/Touch ID sensor off the bottom of the display.

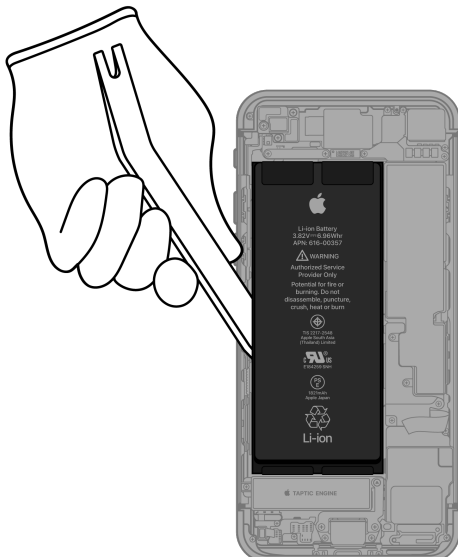


6. Inside the enclosure, carefully remove the lithium-ion polymer battery.



Rechargeable battery hazard

- » *Using tweezers, gently peel one of the battery adhesive tabs away from the battery.*
- » *Twist the tab around the tweezers until white adhesive appears. Continue twisting until the entire adhesive strip is removed.*
- » *Repeat this process for the remaining battery tab. Continue with the miniature plastic pry bar if needed.*



Tools Used



Fraction

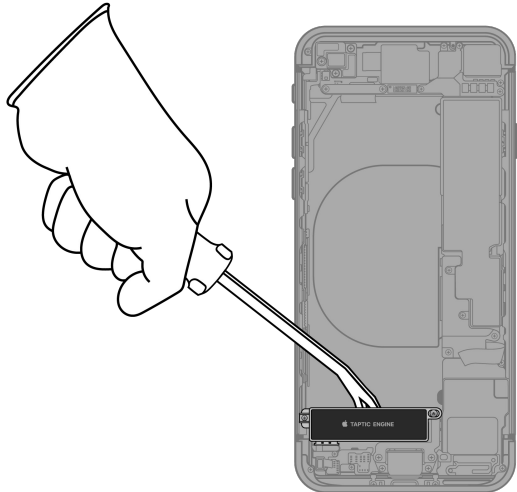


Lithium-ion polymer battery

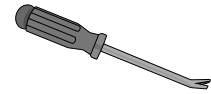
BT

Battery

7. Pry off the Taptic Engine.



Tools Used



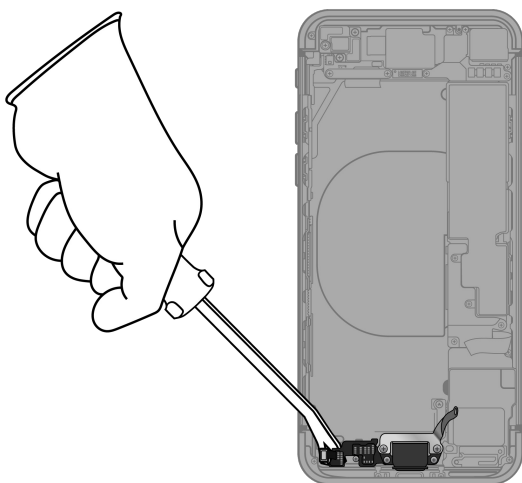
Fraction



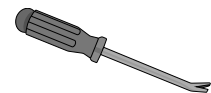
Taptic Engine



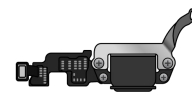
8. Pry off the microphone and Lightning connector assembly.



Tools Used



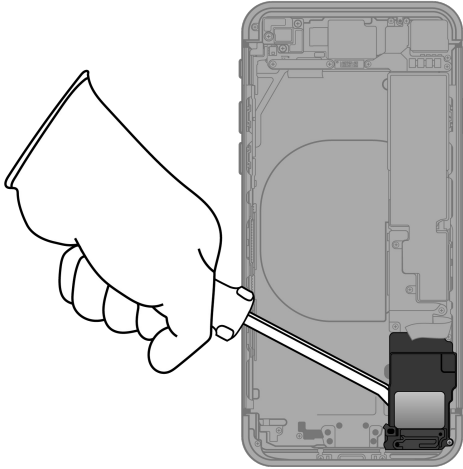
Fraction



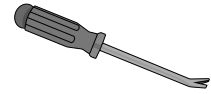
*Microphone and
Lightning connector
assembly*



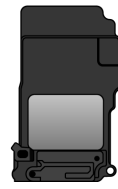
9. Pry off the speaker.



Tools Used



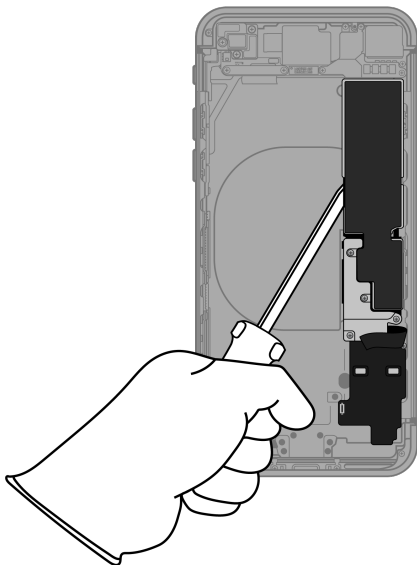
Fraction



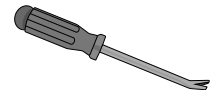
Speaker

REE
Rare Earth
Elements

10. Pry off the main logic board.



Tools Used



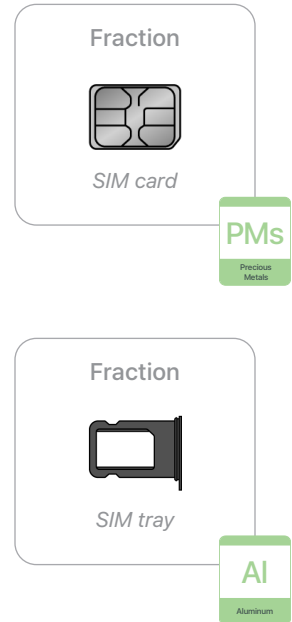
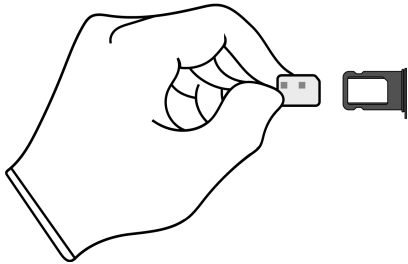
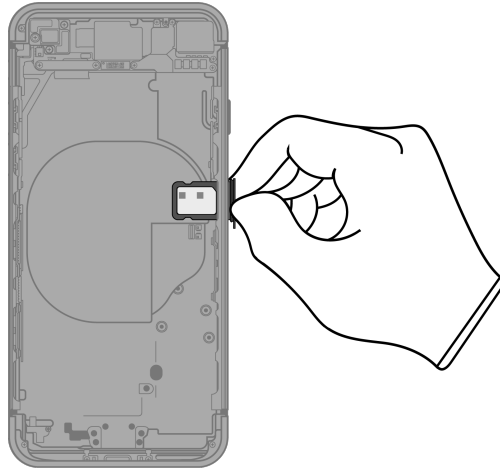
Fraction



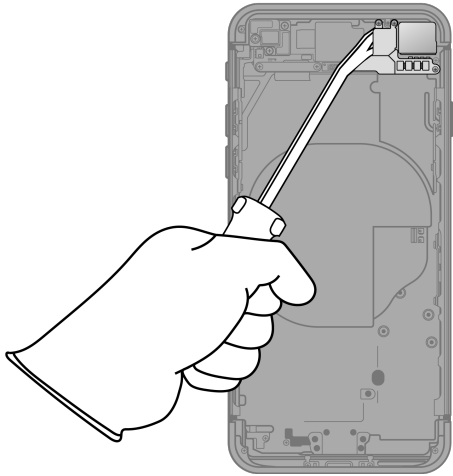
Main logic board

PMs
Precious
Metals

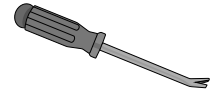
- 11.** Remove the SIM card and SIM tray. Separate the SIM card from the SIM tray.



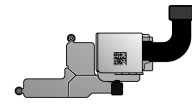
12. Pry off the rear camera.



Tools Used



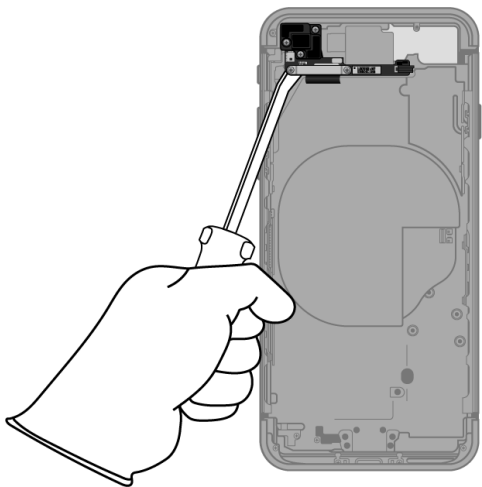
Fraction



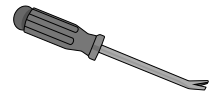
Rear camera



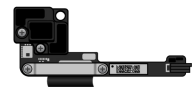
13. Pry off the rear camera logic board.



Tools Used



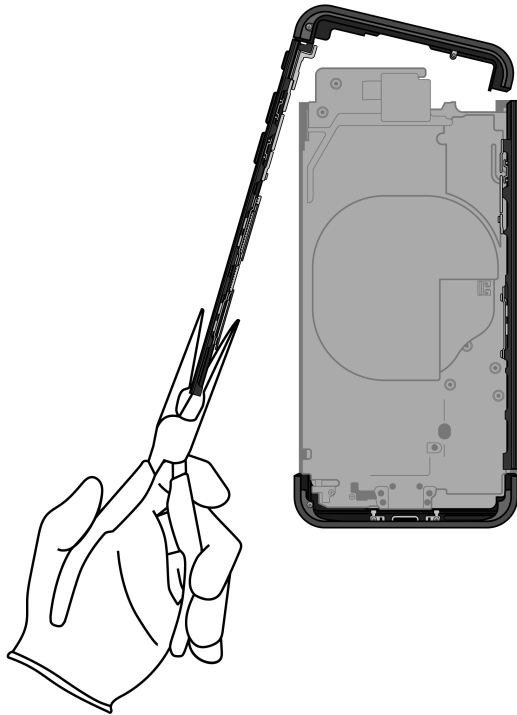
Fraction



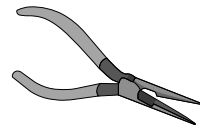
Rear camera
logic board



14. Pull the enclosure band off the support plate.



Tools Used



Fraction

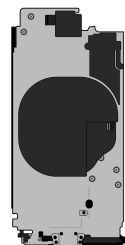


Enclosure band

Al

Aluminum

Fraction






Support plate


Cu

Copper

Material Categorization of Output Fractions

All outputs from this process must be managed, handled, and disposed of in accordance with applicable waste laws and regulations, including but not limited to the Waste Framework Directive and its national enactments in Europe.

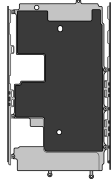
Fraction	Downstream Processing
<p data-bbox="435 604 570 632">Aluminum</p>  <p data-bbox="459 768 545 795"><i>SIM tray</i></p>  <p data-bbox="423 1100 581 1127"><i>Enclosure band</i></p>	<p data-bbox="964 604 1276 632">Primary Target Material</p>  <p data-bbox="1097 699 1133 726">Al</p> <p data-bbox="1097 743 1138 758">Aluminum</p>

<p data-bbox="440 1220 565 1247">Batteries</p>  <p data-bbox="367 1499 634 1526"><i>Lithium-ion polymer battery</i></p>	<p data-bbox="964 1220 1276 1247">Primary Target Material</p>  <p data-bbox="1097 1314 1133 1341">BT</p> <p data-bbox="1097 1358 1138 1373">Battery</p>
---	---

Fraction

Downstream Processing

Ferrous

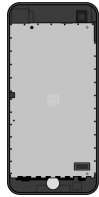


Display shield

Primary Target Material



Glass



LCD cell

Primary Target Material



Potential Additional Materials



Fraction

Downstream Processing

Logic Boards



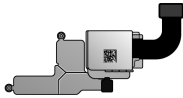
Front camera



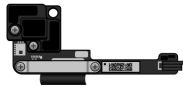
Main logic board



SIM card



Rear camera



Rear camera logic board

Primary Target Material



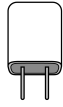
Potential Additional Materials



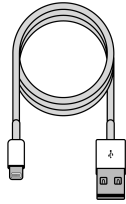
Fraction

Downstream Processing

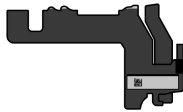
Mixed Electronics



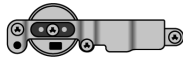
Power adapter



Charge cable



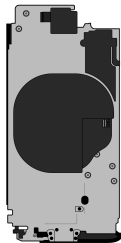
Ribbon cable



Home button/Touch ID sensor



*Microphone and
Lightning connector assembly*



Support plate

Primary Target Material



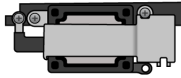
Potential Additional Materials



Fraction

Downstream Processing

Rare Earth Magnets



Receiver



Taptic Engine



Speaker

Primary Target Material



Potential Additional Materials

